

# WELCOME

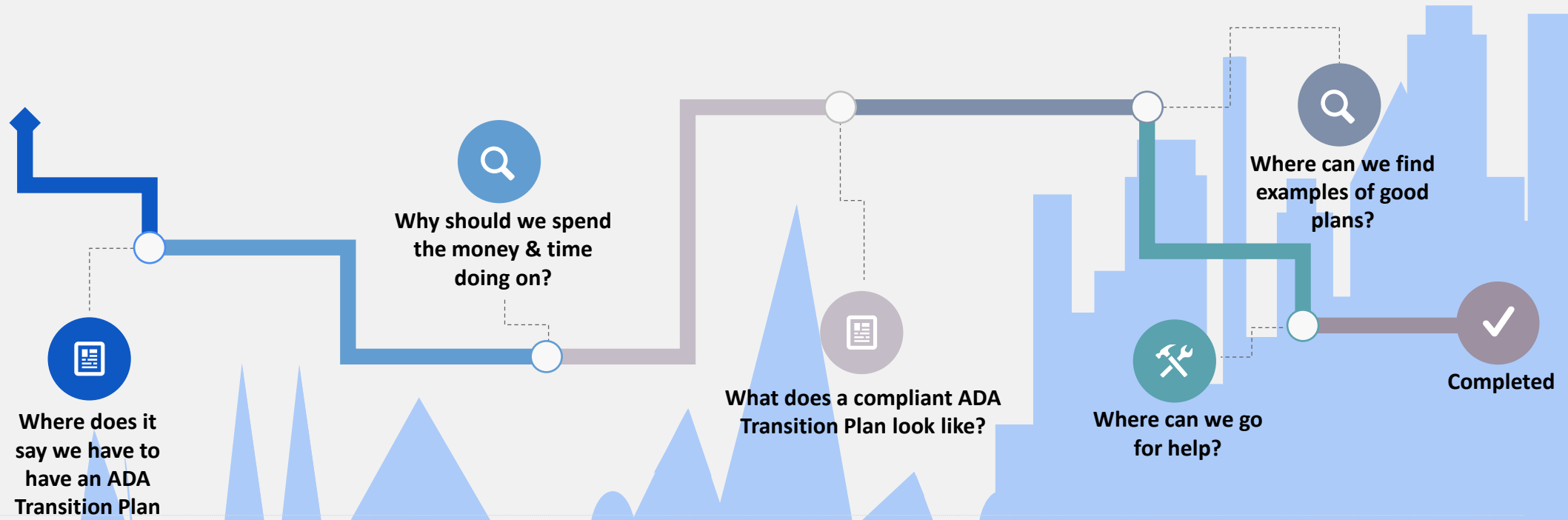
ADA Transition Plans

---

*Lisa Neie*

FHWA Civil Rights Specialist, New Mexico Division

# Road Map



# Where does it say?



- Most specifically in the DOJ’s regulation, Nondiscrimination on the Basis of Disability in State and Local Government Services – 28 CFR 35.150(d)(2) “If a public entity has responsibility over streets, roads, or walkways, its transition plan shall include a schedule for providing curb ramps or other sloped areas where pedestrians cross curbs...”
- Was supposed to have been completed by January 26, 1992.
- But the requirement is older than that – going back to the Rehabilitation Act of 1973. USDOT’s implementing regulation, 49 CFR 27, requires “compliance planning.” This was supposed to have been completed by December 29, 1979.
- In 1987 Congress passed the Civil Rights Restoration Act that expanded nondiscrimination coverage to all areas of a recipient.

# Why should we?



## Legal

It's a legal, regulatory requirement for public entities with more than 50 employees.



## Violation

Violation of such could mean the termination of federal funds to your programs.



## Requirement

The requirement to make sidewalks accessible has been unsuccessfully challenged in the court system. The US Supreme Court has refused to hear appeals by local governments.



## Department of Justice

The DOJ's Project Civic Access could visit. Those reviews look at everything – polling places, jails, websites, parks, etc.



## Community

Most communities advocate inclusiveness for all. Failure to remedy barriers shows “thoughtlessness and inaction” and “simple exclusion.”



## Grandfather

There is no “grandfather” clause.

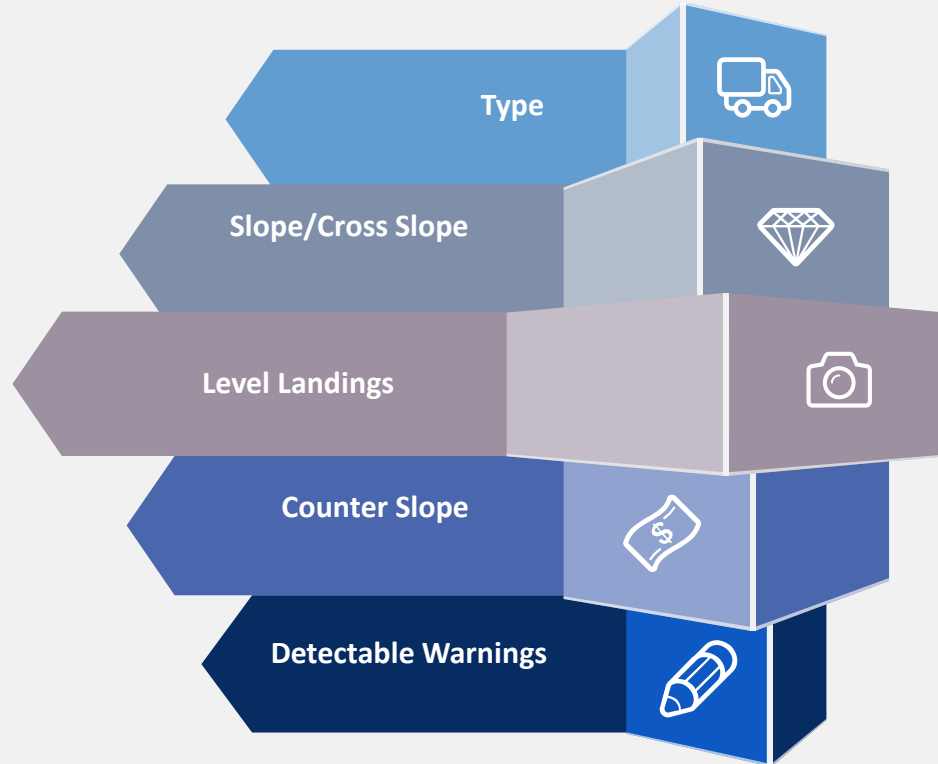
# What does one look like?

1

**The regulation provides four items that must be included:**

Identify physical obstacles in the public entity's facilities that limit the accessibility of its programs or activities to individuals with disabilities. Also known as the self-evaluation.

# Physical Obstacles Include:



# Curb Ramps

# Physical Obstacles Include:

## Sidewalks

- Width
- Surface
- Vertical Discontinuities
- Obstructions
- Slope & Cross Slope
- Driveways



# What does one look like?

(Continued)

Describe in detail the methods that will be used to make the facilities accessible.

Construction?  
Maintenance?  
Adjusting timing?



# What does one look like?

(Continued)

3

Specify the schedule for taking the steps necessary to achieve compliance. If the time period of the transition is longer than one year, identify steps that will be taken during each year of the transition period

# What does one look like?

(Continued)

4

Indicate the name of the official responsible for the implementation of the plan.  
This can be a different person than the designated ADA Coordinator.



# What does one look like?

(Continued)

The ADA Self-evaluation and transition plan must include public involvement. The regulation requires that “interested persons, including individuals with disabilities or organizations representing individuals with disabilities, participate in the development of the transition plan by submitting comments.”

# Other ADA Requirements



## Transition Plan

The transition plan must be available for public inspection. All of it. Including the self-evaluation.



## Local Government

If your local government employs 50 or more persons, you must designate at least one employee to coordinate its efforts to comply with and carry out its responsibilities. You must provide contact information for this employee in a manner that is available to everyone.



## Policy Statement

An ADA policy statement must be developed, signed by the CEO and easily accessible to the public.



## Responsible Party

This person must also be responsible for conducting investigations into complaints.

# Rancho Cordova, CA

City of Rancho Cordova Draft ADA Transition Plan

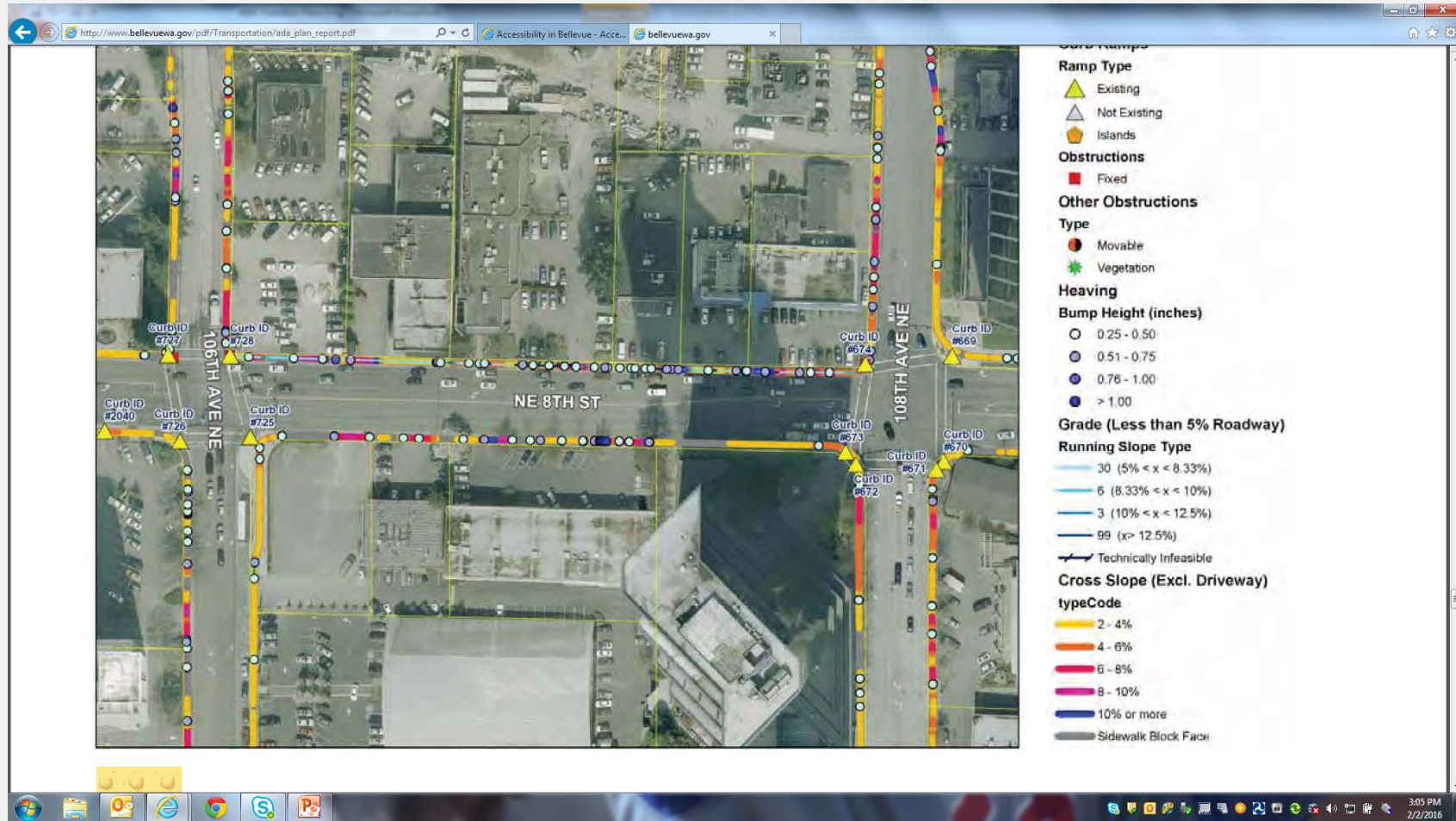
Street 1 (typically NS Street)	Street 2 (typically EW Street)	Land Use	Use	Condi- tion	Work Scope	Fund- ing	Crb Rmp	Aud. sig- nals	FY	Curb Ramp Costs	Signal Costs	Cross- walk Costs	Sidewalk Costs	Total Costs
<b>FY 2005-2006</b>														
Zinfandel Dr	Olson Dr	Public Use	1	2	2	CR	8	No	05	\$50,080		\$6,080	\$6,560	\$62,720
Van Nuys Way	Ambassador Dr	School	1	2	4	Z	4	No	05	\$25,040		\$3,040	\$6,150	\$34,230
VEHICLE DR	COLOMA RD	Public Use	1	1	10	Z	1	No	05	\$145				\$145
COLOMA RD	KIMWOOD LN	Public Use	1	1	10	Z	2	No	05	\$290				\$290
TRINITY RIVER DR	SUNRISE BLVD	Public Use	1	1	10	Z	1	No	05	\$145				\$145
TRADE CENTER DR	QUARRY CT	Public Use	1	1	10	Z	2	No	05	\$290				\$290
OLSON DR	GWENDOLYN WAY	Commercial	2	1	10	Z	1	No	05	\$145				\$145
GOLD CENTER DR	ZINFANDEL DR	Public Use	1	1	10	Z	1	No	05	\$145				\$145
DATA DR	WHITE ROCK RD	Public Use	1	1	10	Z	2	No	05	\$290				\$290
GREEN WING WAY	RAVEN'S WAY	Commercial	2	1	10	Z	1	No	05	\$145				\$145
FOLSOM BLVD	PASEO RIO WAY	Public Use	1	1	10	Z	1	No	05	\$145				\$145
SCHRIEVER AVE	OLD PLACERVILLE RD	Public Use	1	1	10	Z	1	No	05	\$145				\$145
ROCKINGHAM DR	OLD PLACERVILLE RD	Public Use	1	1	10	Z	1	No	05	\$145				\$145
KILGORE RD	WHITE ROCK RD	Public Use	1	1	10	Z	3	No	05	\$435				\$435
WHITE ROCK RD	PROSPECT PARK DR	Public Use	1	1	10	Z	2	No	05	\$290				\$290
ZINFANDEL DR	HWY 50	Public Use	1	1	10	Z	1	No	05	\$145				\$145
SUNRISE BLVD	WHITE ROCK RD	Public Use	1	1	10	Z	1	No	05	\$145				\$145
			17							\$78,165	\$0	\$9,120	\$12,710	\$99,995
<b>FY 2006-2007</b>														
Rossmoor Dr	Ambassador Dr	School	1	2	2	Z	4	No	07	\$25,040		\$6,080	\$6,150	\$37,270
Ambassador Dr	Forestlake Dr	School	1	2	2	Z	6	No	07	\$37,560		\$4,560	\$6,150	\$48,270
			2							\$62,600	\$0	\$10,640	\$12,300	\$85,540
<b>FY 2007-2008</b>														
Matheson Field Rd	Forestlake Dr	Transit & School	1	2	1	C	8	No	06	\$50,000	\$11,840	\$6,080	\$0,810	\$68,730

# Lake County, Florida

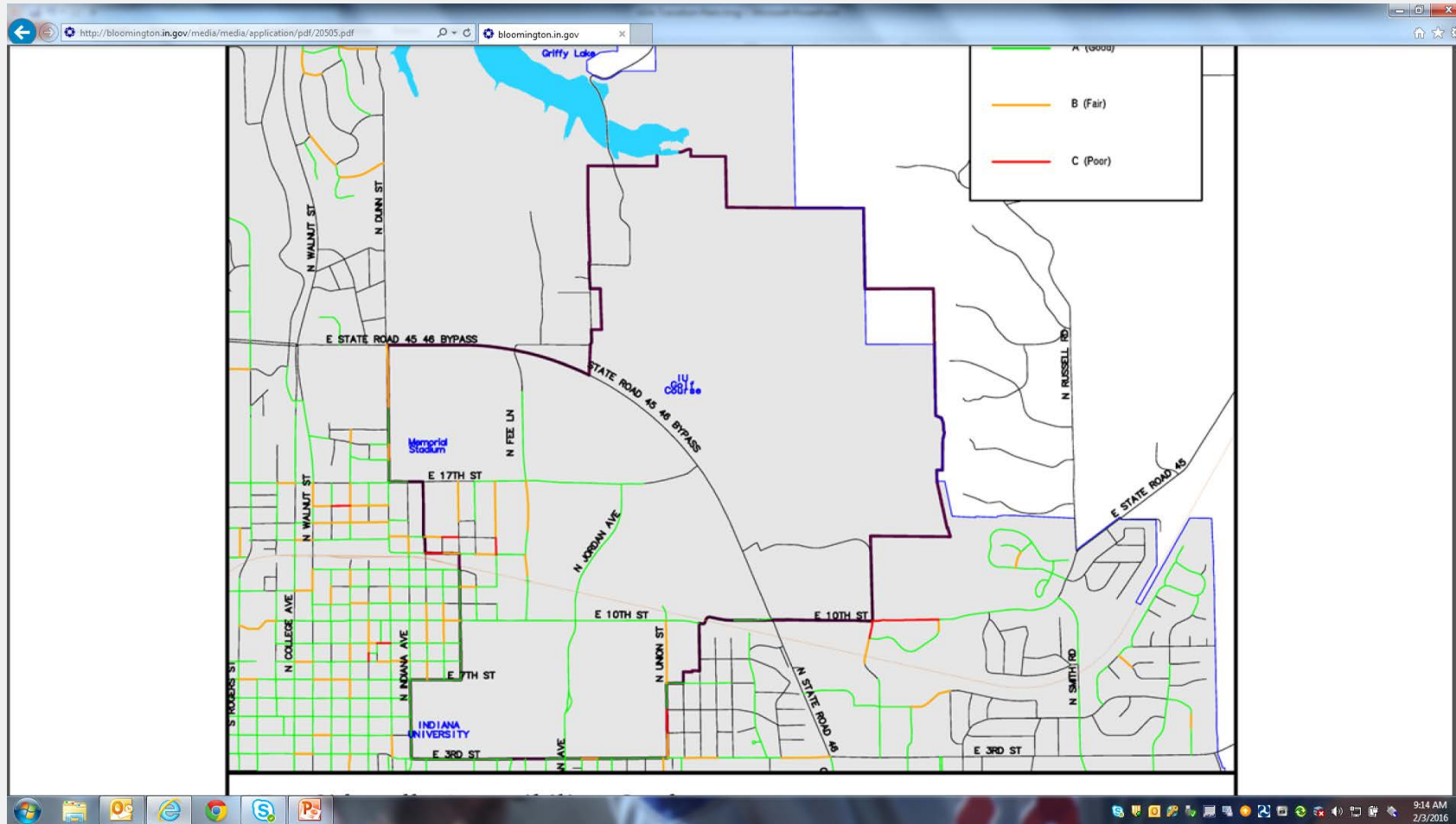
LAKE COUNTY, FLORIDA - ADA Transition Plan - Sidewalks

ID	City	City	Sidewalk Type	Location	Route	Route Ahead	Route Back	Length	Side	Sidewalk Condition	Deficiency	Code	Proposed Correction	Photo Link	Point X	Point Y	Cost	Priority	Schedule	Official Responsible	Capital Improvement Project	Status	Comments
2-1350-03	Clemont	Clemont	Concrete	Segment	CITRUS TOWER BLVD	NORTH VILLAGE BLVD	SUNSET VILLAGE BLVD	450	S	A. COMPLAINT 0-24% or more in bad condition.	Accessible route has a non-compliant cross slope of 3.37%.	6A.3	Rework or repair accessible route providing a cross slope not exceeding 2%.	PHOTO:05201119 23_152923.jpg	423135.7764	1516788.287	\$ 6,315.00	2	MEDIUM TERM	City of Clemont - Public Works Director			
2-1350-03	Clemont	Clemont	Concrete	Segment	CITRUS TOWER BLVD	GARLEY SEAWER DR	DOIR RICHMOND DR	938	E	A. COMPLAINT 0-24% or more in bad condition.	Accessible route has a non-compliant cross slope of 3.4%.	6A.3	Rework or repair accessible route providing a cross slope not exceeding 2%.	PHOTO:05201119 23_095293.jpg	423949.6931	1533825.574	\$ 12,897.50	1	SHORT TERM	City of Clemont - Public Works Director			
2-1350-05	Clemont	Clemont	Concrete	Segment	CITRUS TOWER BLVD	LEGEND WAY	SR 50	400	E	A. COMPLAINT 0-24% or more in bad condition.	Accessible route has a non-compliant cross slope of 4.23%.	6A.3	Rework or repair accessible route providing a cross slope not exceeding 2%.	PHOTO:05201119 23_011567.jpg	423950.3709	1533324.833	\$ 5,500.00	1	SHORT TERM	City of Clemont - Public Works Director			
2-1350-51	Clemont	Clemont	Concrete	Segment	CITRUS TOWER BLVD	SILHOUETTE DR	GARLEY SEAWER DR	822	W	A. COMPLAINT 0-24% or more in bad condition.	Accessible route has a non-compliant cross slope of 3.37%.	6A.3	Rework or repair accessible route providing a cross slope not exceeding 2%.	PHOTO:05201119 23_112445.jpg	423888.0429	1533938.809	\$ 11,302.50	2	MEDIUM TERM	City of Clemont - Public Works Director			
2-1350-05	Clemont	Clemont	Concrete	Segment	CITRUS TOWER BLVD	HURT TRACE BLVD	SR 50	400	W	A. COMPLAINT 0-24% or more in bad condition.	Accessible route has a non-compliant cross slope of 2.7%.	6A.3	Rework or repair accessible route providing a cross slope not exceeding 2%.	PHOTO:05201119 23_091002.jpg	423854.084	1533322.716	\$ 5,500.00	1	SHORT TERM	City of Clemont - Public Works Director			
2-1350-92	Clemont	Clemont	Concrete	Segment	CITRUS TOWER BLVD	SHEAR WATER CT	CROSS RIDGE RD	822	W	A. COMPLAINT 0-24% or more in bad condition.	Accessible route has a non-compliant cross slope of 2.73%.	6A.3	Rework or repair accessible route providing a cross slope not exceeding 2%.	PHOTO:05201119 23_103449.jpg	422338.197	1526169.199	\$ 11,302.50	2	MEDIUM TERM	City of Clemont - Public Works Director			
2-0945-65	Clemont	Clemont	Concrete	Segment	HAWCOCK REDGE RD	US HWY 27	ROPER BLVD	3950	N	A. COMPLAINT 0-24% or more in bad condition.	The surface of the sidewalk is unstable and has loose material.	6A.5	Rework and clean sidewalk to provide a stable, firm, and slip-resistant floor surface.	PHOTO:05201119 23_100713.jpg	421835.8834	152131.2	\$ 54,312.50	2	MEDIUM TERM	City of Clemont - Public Works Director			
2-0945-66	Clemont	Clemont	Concrete	Segment	HAWCOCK REDGE RD	US HWY 27	ROPER BLVD	3950	N	A. COMPLAINT 0-24% or more in bad condition.	Sidewalk does have a surface containing slab cracked and the walkway are not flush and/or free of abrupt changes.	6A.5	Rework area and provide a transition to the walkway flush and free of abrupt changes (ADAAG Fig. 7 c, d).	PHOTO:05201119 23_100719.jpg	421835.8834	152133.2	Included on previous item	2	MEDIUM TERM	City of Clemont - Public Works Director			
2-1354-02	Clemont	Clemont	Concrete	Segment	N HAWCOCK RD	LEGENDS WAY	SR 50	538	E	A. COMPLAINT 0-24% or more in bad condition.	Transition between slabs of the walkway are not flush and/or free of abrupt changes.	6A.5	Rework area and provide a transition to the walkway flush and free of abrupt changes (ADAAG Fig. 7 c, d).	PHOTO:05201119 27_102842.jpg	420248.3771	1511264.598	\$ 7,397.50	2	MEDIUM TERM	City of Clemont - Public Works Director			
2-1354-02	Clemont	Clemont	Concrete	Segment	N HAWCOCK RD	LEGENDS WAY	SR 50	538	E	A. COMPLAINT 0-24% or more in bad condition.	Sidewalk does have a surface containing slab cracked and the walkway are not flush and/or free of abrupt changes.	6A.5	Rework area and provide a transition to the walkway flush and free of abrupt changes (ADAAG Fig. 7 c, d).	PHOTO:05201119 27_102842.jpg	420248.3771	1512284.598	Included on previous item	2	MEDIUM TERM	City of Clemont - Public Works Director			
2-1254-10	Clemont	Clemont	Concrete	Segment	HAWCOCK RD	SR 50	HOCKS ST	1310	E	A. COMPLAINT 0-24% or more in bad condition.	Sidewalk does have a surface containing slab cracked and the walkway are not flush and/or free of abrupt changes.	6A.5	Rework area and provide a transition to the walkway flush and free of abrupt changes (ADAAG Fig. 7 c, d).	PHOTO:05201119 27_102443.jpg	420215.033	1510996.505	\$ 18,012.50	2	MEDIUM TERM	City of Clemont - Public Works Director			
2-1254-10	Clemont	Clemont	Concrete	Segment	HAWCOCK RD	SR 50	HOCKS ST	1310	E	A. COMPLAINT 0-24% or more in bad condition.	Transition with other elements of the walkway are not flush and/or free of abrupt changes.	6A.5	Rework area and provide a transition to the walkway flush and free of abrupt changes (ADAAG Fig. 7 c, d).	PHOTO:05201119 27_102449.jpg	420215.033	1510996.505	Included on previous item	2	MEDIUM TERM	City of Clemont - Public Works Director			
2-1445-04	Clemont	Clemont	Concrete	Segment	HAWCOCK RD	HERITAGE HILLS BLVD	CLEARVIEW ST	709	E	A. COMPLAINT 0-24% or more in bad condition.	Sidewalk does have a surface containing slab cracked and the walkway are not flush and/or free of abrupt changes.	6A.5	Rework area and provide a transition to the walkway flush and free of abrupt changes (ADAAG Fig. 7 c, d).	PHOTO:05201119 27_119154.jpg	420120.8662	1518492.685	\$ 19,715.00	2	MEDIUM TERM	City of Clemont - Public Works Director			
2-1445-04	Clemont	Clemont	Concrete	Segment	HAWCOCK RD	CLEARVIEW ST	SUNBURST LN	510	E	A. COMPLAINT 0-24% or more in bad condition.	Sidewalk does have a surface containing slab cracked and the walkway are not flush and/or free of abrupt changes.	6A.5	Rework area and provide a transition to the walkway flush and free of abrupt changes (ADAAG Fig. 7 c, d).	PHOTO:05201119 27_119308.jpg	420207.8014	1522326.004	\$ 72,187.50	2	MEDIUM TERM	City of Clemont - Public Works Director			
2-1445-08	Clemont	Clemont	Asp Sidewalk	Segment	S GRAND HWY	SR 50	ALHORO ST	525	W	A. NO SIDEWALK	Sidewalk does have a surface containing slab cracked and the walkway are not flush and/or free of abrupt changes.	6A.5	Rework area and provide a transition to the walkway flush and free of abrupt changes (ADAAG Fig. 7 c, d).	PHOTO:05201119 27_103103.jpg	418901.0398	1537847.653	\$ 23,625.00	2	MEDIUM TERM	City of Clemont - Public Works Director			
2-1354-11	Clemont	Clemont	Concrete	Segment	S GRAND HWY	SR 50	ALHORO ST	525	W	3. BDD SD 75% or more in bad condition.	Sidewalk does have a surface containing slab cracked and the walkway are not flush and/or free of abrupt changes.	6A.5	Rework area and provide a transition to the walkway flush and free of abrupt changes (ADAAG Fig. 7 c, d).	PHOTO:05201119 27_103111.jpg	418901.2232	1537856.660	\$ 21,665.25	2	MEDIUM TERM	City of Clemont - Public Works Director			
2-1354-08	Clemont	Clemont	Concrete	Segment	N HAWCOCK RD	DARYL H CARTER BLVD	LEGENDS WAY	947	W	A. COMPLAINT 0-24% or more in bad condition.	Accessible route has a non-compliant cross slope of 2.28%.	6A.3	Rework or repair accessible route providing a cross slope not exceeding 2%.	PHOTO:05201119 27_050308.jpg	420163.5321	1533523.924	\$ 13,012.25	2	MEDIUM TERM	City of Clemont - Public Works Director			
2-1354-03	Clemont	Clemont	Concrete	Segment	N HAWCOCK RD	LEGENDS WAY	DARYL H CARTER BLVD	947	W	A. COMPLAINT 0-24% or more in bad condition.	Sidewalk does have a surface containing slab cracked and the walkway are not flush and/or free of abrupt changes.	6A.5	Rework area and provide a transition to the walkway flush and free of abrupt changes (ADAAG Fig. 7 c, d).	PHOTO:05201119 27_052941.jpg	420161.7132	153288.956	\$ 13,012.25	2	MEDIUM TERM	City of Clemont - Public Works Director			
2-1254-11	Clemont	Clemont	Concrete	Segment	HAWCOCK RD	SR 50	HOCKS ST	1310	W	A. COMPLAINT 0-24% or more in bad condition.	Accessible route has a non-compliant cross slope of 2.56%.	6A.3	Rework or repair accessible route providing a cross slope not exceeding 2%.	PHOTO:05201119 27_102739.jpg	420129.6827	1530834.647	\$ 18,012.50	2	MEDIUM TERM	City of Clemont - Public Works Director			
2-1445-10	Clemont	Clemont	Concrete	Segment	S GRAND HWY	ALPOND ST	NORTH RIDGE BLVD	3151	E	3. GOOD, 25-49% or more in bad condition.	Sidewalk does have a surface containing slab cracked and the walkway are not flush and/or free of abrupt changes.	6A.5	Rework area and provide a transition to the walkway flush and free of abrupt changes (ADAAG Fig. 7 c, d).	PHOTO:05201119 27_102608.jpg	418574.453	1533643.044	\$ 96,662.50	2	MEDIUM TERM	City of Clemont - Public Works Director			
2-1158-10	Clemont	Clemont	Concrete	Segment	JOHNS LAKE ROAD	CITRUS TOWER BLVD	EAGLE LAKE DRIVE	1055	N	A. COMPLAINT 0-24% or more in bad condition.	Accessible route has a non-compliant cross slope of 2.81%.	6A.3	Rework or repair accessible route providing a cross slope not exceeding 2%.	PHOTO:05201119 27_050310.jpg	422111.9287	1532288.221	\$ 15,055.25	2	MEDIUM TERM	City of Clemont - Public Works Director			

# Bellevue, WA

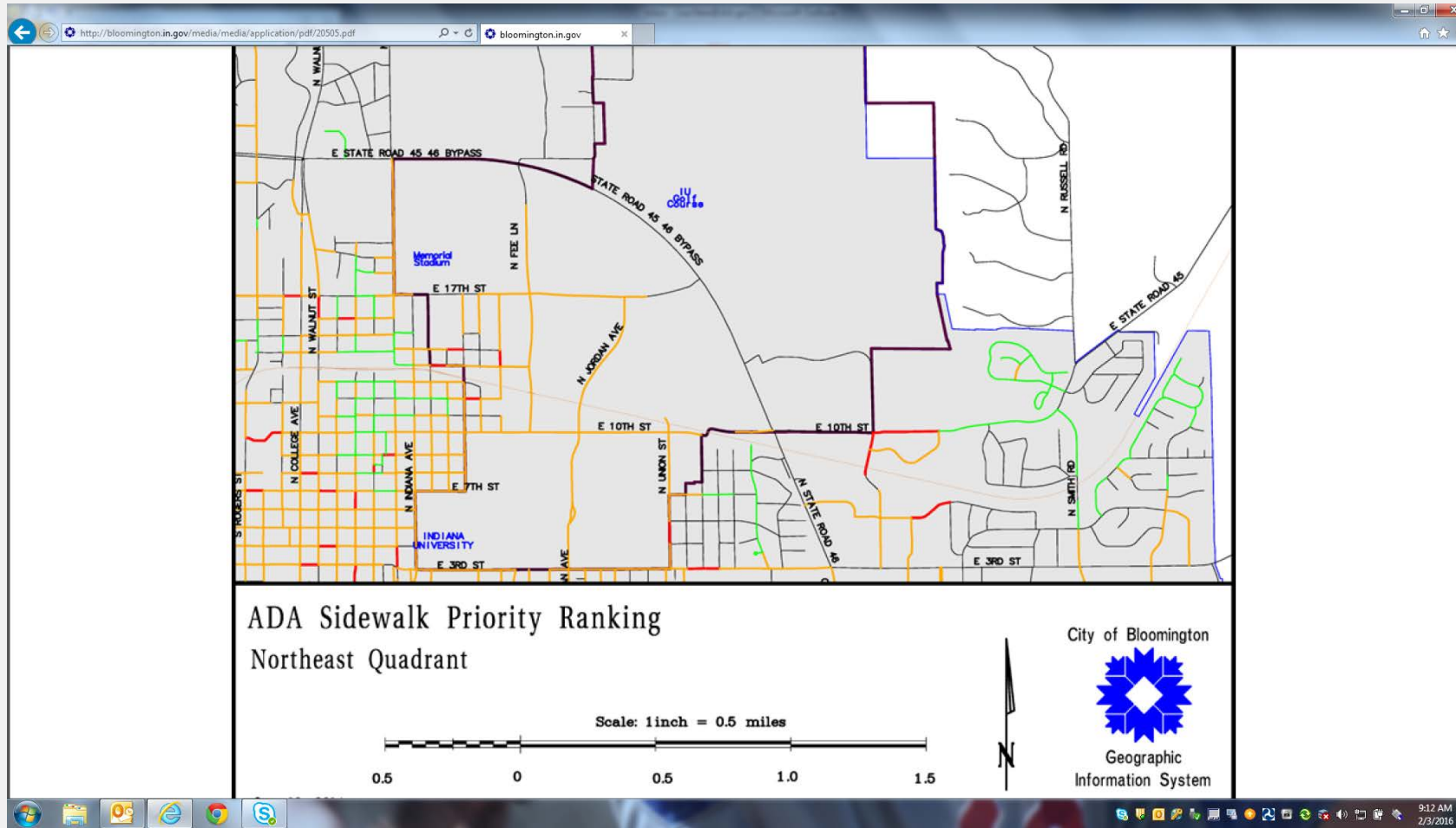


# Bloomington, IN

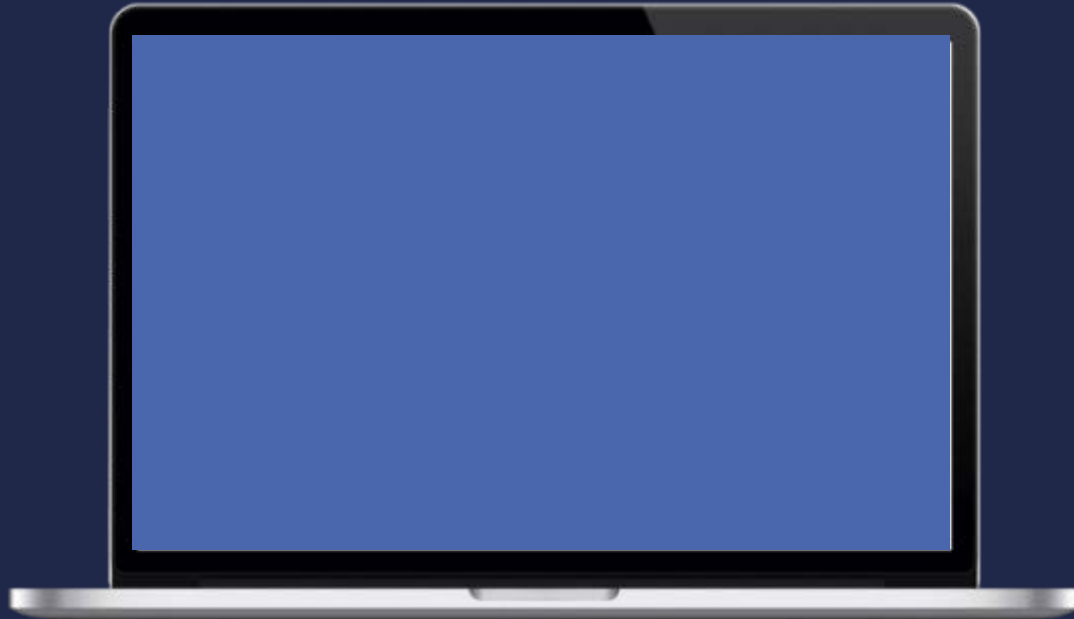




# Bloomington, IN



# Resources



ADA.gov – 2010 ADA Standards (included ADAAG); Toolkit for State and Local Governments



[fhwa.dot.gov/civilrights/programs/ada.cfm](https://www.fhwa.dot.gov/civilrights/programs/ada.cfm)



Access-board.gov – Public Rights-of-Way Accessibility Guidelines (PROWAG) & Shared Use Paths



Me – I don't know all but I am good at finding answers.