

I-15, Virgin River Bridge No. 1

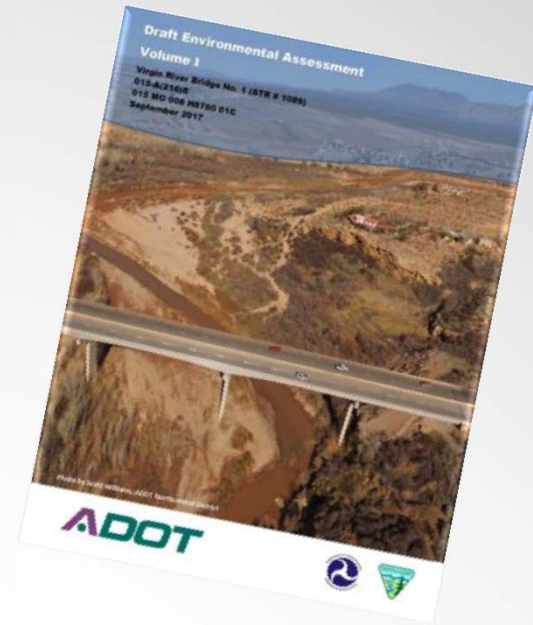
Draft Environmental Assessment



November 29, 2017

Presentation Overview

- ▶ Introduction and project overview
- ▶ Public outreach and agency coordination
- ▶ Purpose and need
- ▶ Alternatives considered
- ▶ Description of the proposed action
- ▶ Potential environmental consequences and mitigation
- ▶ Next steps and project timeline
- ▶ Commenting on the Draft Environmental Assessment



ADOT Self-Identification Survey Cards

- ▶ Self-identification survey cards are available at this meeting
- ▶ ADOT asks that you fill one out and turn it in before you leave
- ▶ The information you provide helps ADOT determine who attends public meetings
- ▶ The information is anonymous
- ▶ The information enables ADOT to fulfill federal reporting requirements from the Federal Highway Administration (FHWA)
- ▶ Completing the survey is voluntary

TITLE VI OF THE CIVIL RIGHTS ACT OF 1964 AND THE AMERICANS WITH DISABILITIES ACT (ADA)

Pursuant to Title VI of the Civil Rights Act of 1964, and the Americans with Disabilities Act (ADA), ADOT does not discriminate on the basis of race, color, national origin, age, sex or disability. Persons who require a reasonable accommodation based on language or disability should contact ADOT's Civil Rights Office at 602.712.8946 or at civilrightsoffice@azdot.gov. Requests should be made as early as possible to ensure the State has an opportunity to address the accommodation.

De acuerdo con el título VI de la Ley de Derechos Civiles de 1964 y la Ley de Estadounidenses con Discapacidades (ADA por sus siglas en inglés), el Departamento de Transporte de Arizona (ADOT por sus siglas en inglés) no discrimina por raza, color, nacionalidad, edad, género o discapacidad. Personas que requieren asistencia (dentro de lo razonable) ya sea por el idioma o por discapacidad deben ponerse en contacto con la Oficina de Derechos Civiles al 602.712.8946 o en civilrightsoffice@azdot.gov. Las solicitudes deben hacerse lo más pronto posible para asegurar que el equipo encargado del proyecto tenga la oportunidad de hacer los arreglos necesarios.

Project Scoping

Public Outreach and Agency Coordination



- ▶ **Bulk mailing to 45,000 residents and businesses**
- ▶ **E-mail and social media blast to 4,000 additional parties**
- ▶ **Received 115 responses providing 203 comments**
- ▶ **Comments and questions fell into 3 main categories:**
 - **Construction (time, lighting, utilities, vibration etc.)**
 - **Minimizing project footprint/duration**
 - **Environmental impacts (noise, water, erosion, wildlife, and recreation including Little Jamaica)**

Project Scoping

Public Outreach and Agency Coordination

- ▶ Contacted 28 federal, state, and local agencies and jurisdictions
- ▶ Responses from:
 - Arizona Game and Fish Department
 - Mohave County
 - Nevada Dept. of Transportation
 - Utah Dept. of Transportation
 - U.S. Fish and Wildlife Service
- ▶ Multiple agency meetings



Purpose and Need

Importance of I-15

- ▶ Trade and transportation corridor
- ▶ Local and regional connectivity
 - Beaver Dam, Littlefield, and Scenic to St. George, Utah and Mesquite, Nevada
 - Salt Lake City to Las Vegas



Purpose and Need

Condition of Bridge No. 1



- ▶ Aging infrastructure
- ▶ Heavy wear and tear
- ▶ Truck traffic could be restricted
- ▶ Facilitate movement of people, goods, and services

Purpose and Need

Condition of Bridge No. 1



- ▶ Aging infrastructure
- ▶ Heavy wear and tear
- ▶ Truck traffic could be restricted
- ▶ Facilitate movement of people, goods, and services

Alternatives

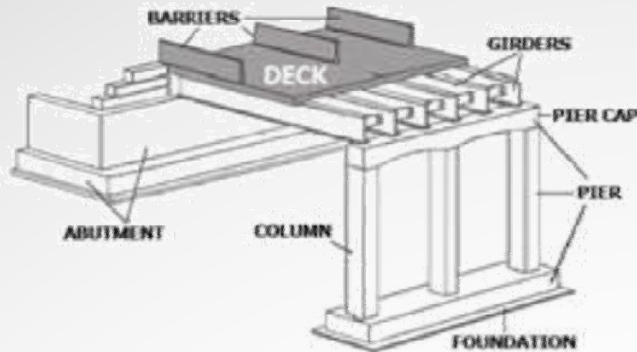
Design Alternatives Considered

- ▶ Replace deck and barriers
- ▶ Replace superstructure
- ▶ Construct new bridge on a shifted alignment

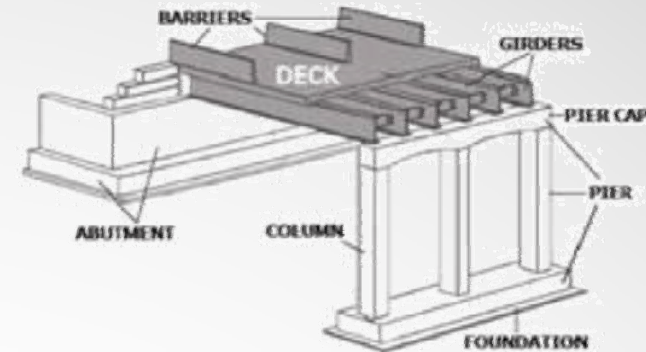


Alternatives: Design Alternatives Considered

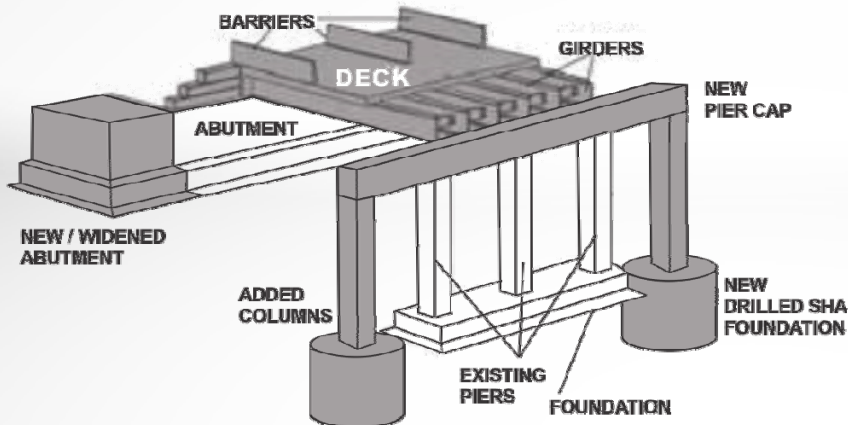
Deck Replacement



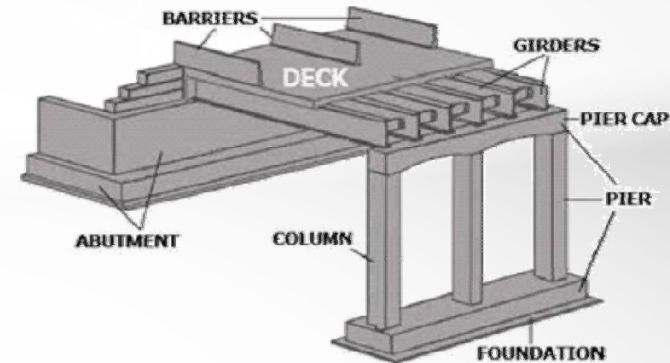
Superstructure Replacement



Widening and Rehabilitation



Widening and Reconstruction / Full Bridge Replacement



Alternatives

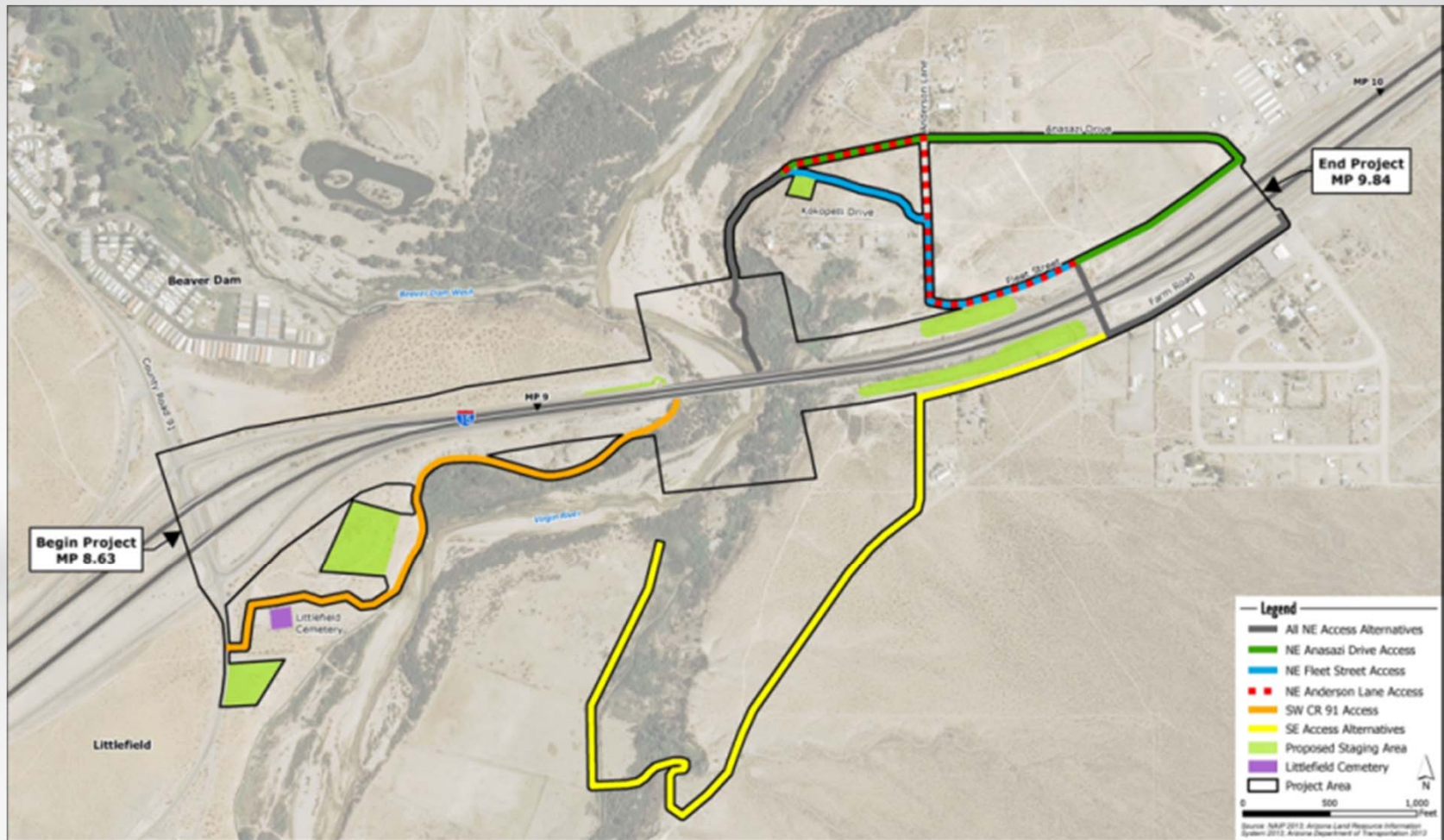
Evaluated In Detail

- ▶ Widen and rehabilitate bridge
- ▶ Reconstruct entire bridge
- ▶ No action alternative



Alternatives

Access Alternatives Evaluated



Alternatives

Little Jamaica Alternatives Evaluated

- ▶ Boulder Placement
- ▶ Fencing



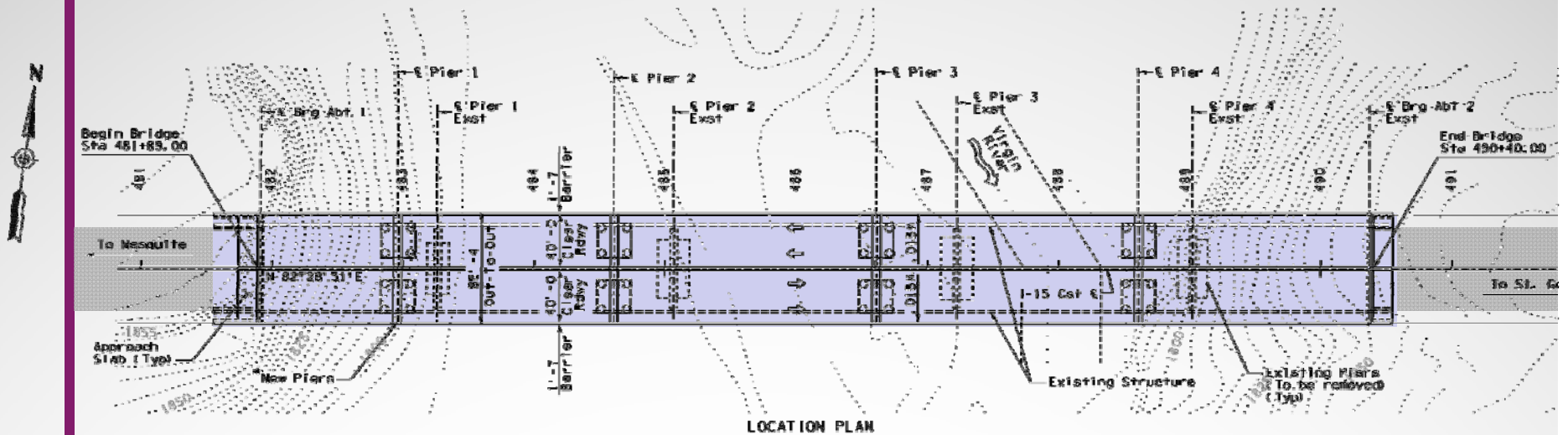


Proposed Action

Overview



Proposed Action



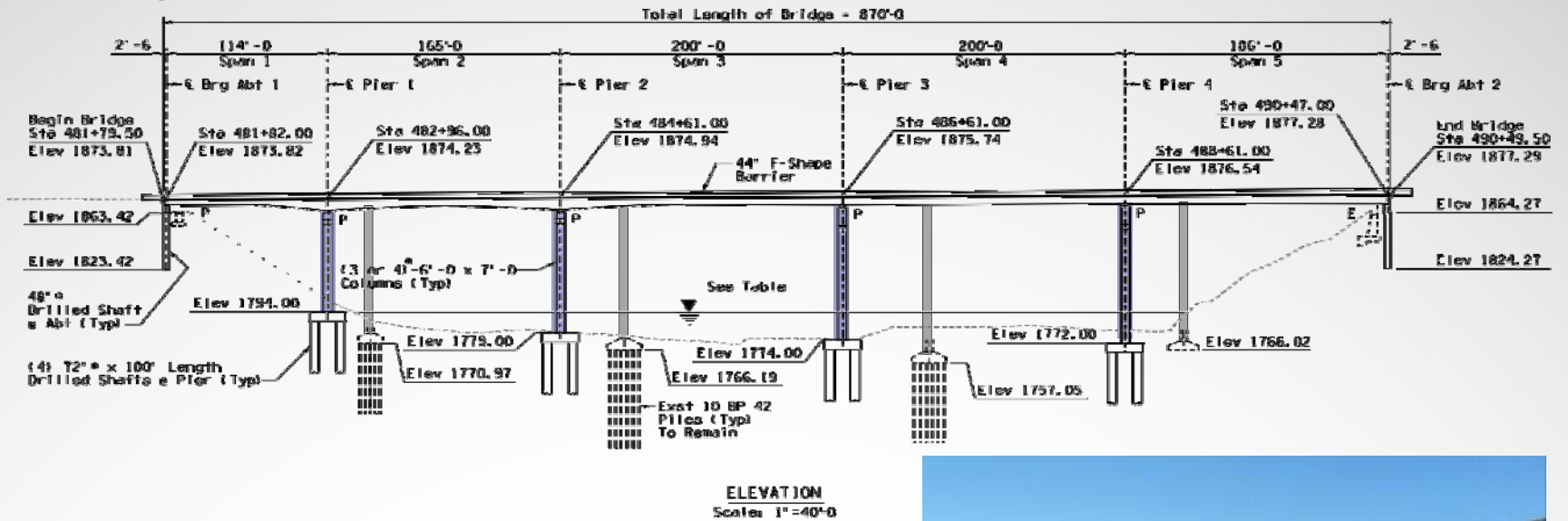
Existing I-15 Roadway w/ Narrow Shoulders



Proposed I-15 Roadway Bridge with Full Shoulders

New Bridge Centered on Existing Roadway

Proposed Action



Existing I-15 Bridge Columns

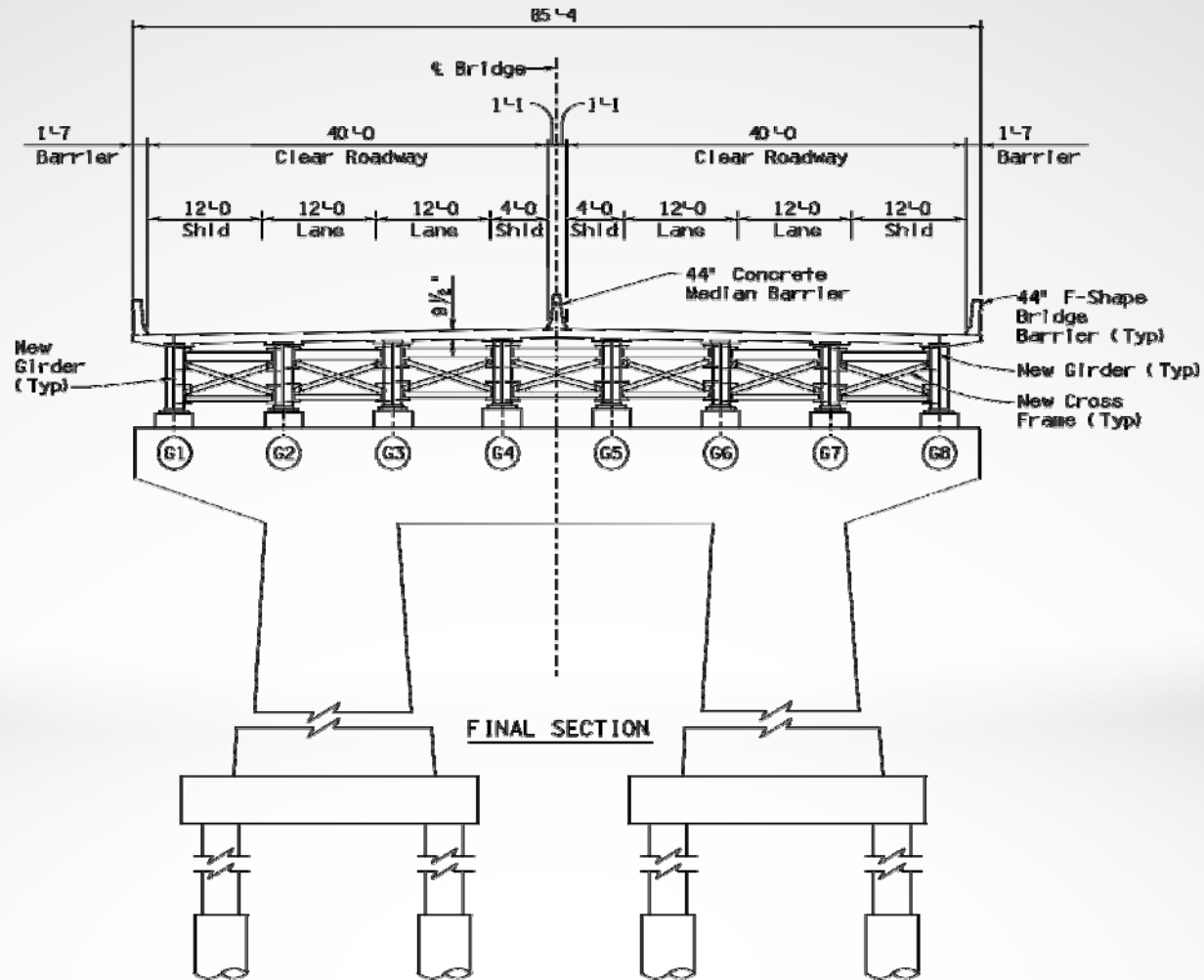


Proposed I-15 Bridge Columns



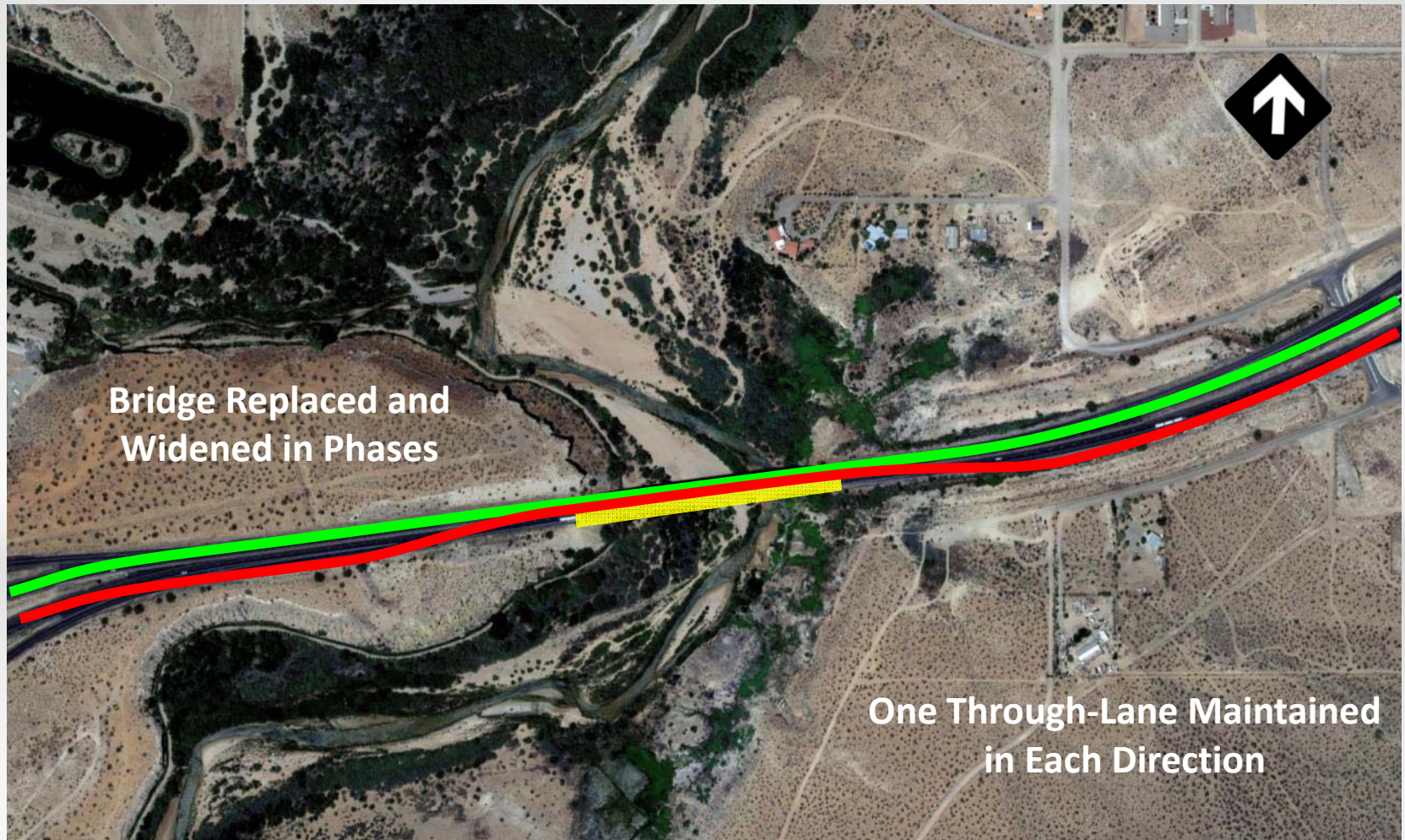
New Bridge Centered on Existing Roadway
New Bridge Similarly Spans Virgin River

Proposed Action



Proposed Action

Traffic Control



Potential Environmental Consequences and Mitigation

Resource Categories Eliminated From Study

- Fuels/Fire management
- Livestock grazing
- Mineral resources
- National landmarks
- Outstanding waters
- Paleontology
- Prime or unique farmland
- Section 6(f) resources
- Sole source aquifer
- Wild horses and burros
- Wilderness
- Woodland/Forestry



Potential Environmental Consequences and Mitigation

Resource Evaluated in Detail

- Biological Resources
- Clean Water Act and National Pollutant Discharge Elimination System
- Cultural Resources
- Drainage and Floodplains
- Farmlands of Statewide Importance
- Hazardous Materials
- Land Use and Jurisdiction
- Material Sources and Waste Materials
- Noise
- Section 4(f) Resources
- Socioeconomics
- Soils and Geologic Resources
- Utilities
- Visual Resources
- Wild and Scenic Rivers



Potential Environmental Consequences and Mitigation

Socioeconomics

- ▶ No relocations or displacements
- ▶ Temporary delays
- ▶ Public notification/advanced warning



Potential Environmental Consequences and Mitigation

Biological Resources

- ▶ Endangered Species Act species (8), critical habitat, and BLM sensitive species (11)
- ▶ Native plants, invasive species, and riparian areas
- ▶ Impacts minimized through the use of conservation measures and best management practices



Potential Environmental Consequences and Mitigation

Visual and Scenic Quality

- ▶ BLM visual resource management classifications
 - Minor to moderate changes to the landscape allowed
- ▶ New bridge would use similar style, scale as current bridge
- ▶ Colors would blend with surroundings



Potential Environmental Consequences and Mitigation

Recreation

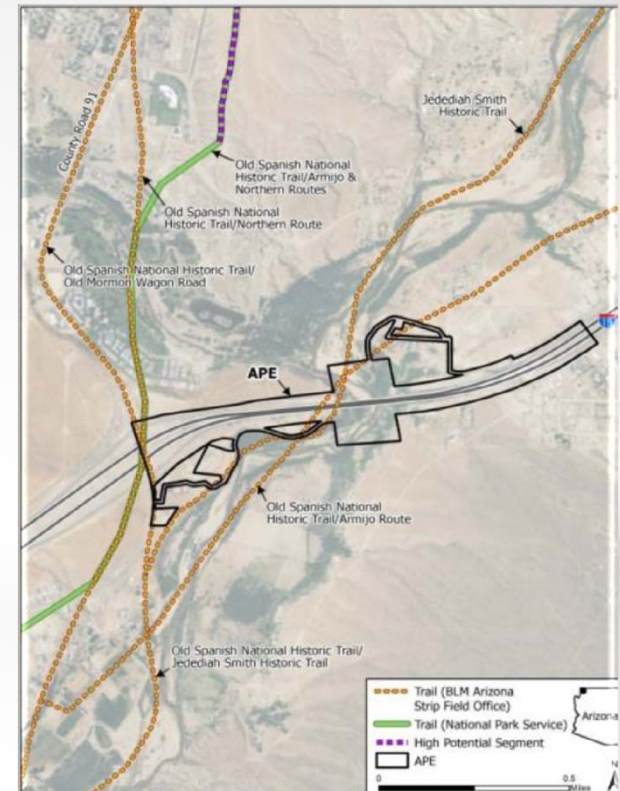
- ▶ Infrequent kayaking, rafting, and water play, use of Little Jamaica
- ▶ Removal of Little Jamaica
- ▶ Up to two-year closure
- ▶ Notify user groups of river closures and post signs



Potential Environmental Consequences and Mitigation

Section 4(f) Properties

- ▶ Publicly owned recreational and historic resources are protected
- ▶ Cultural site avoided; SHPO concurred with no adverse effect
- ▶ Old Spanish Trail and Jedidiah Smith Trail alignments



Potential Environmental Consequences and Mitigation

Water Resources

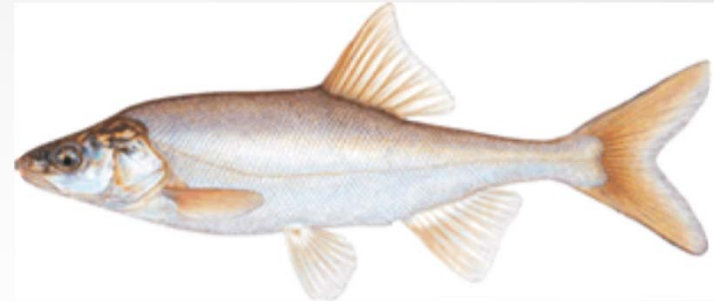
- ▶ Wetlands and open water
- ▶ Clean Water Act protection
- ▶ Wild and Scenic Rivers status



Potential Environmental Consequences and Mitigation

Secondary and Cumulative Impacts

- ▶ **What are secondary and cumulative impacts?**
- ▶ **Resources potentially affected**
- ▶ **Minimizing impacts**



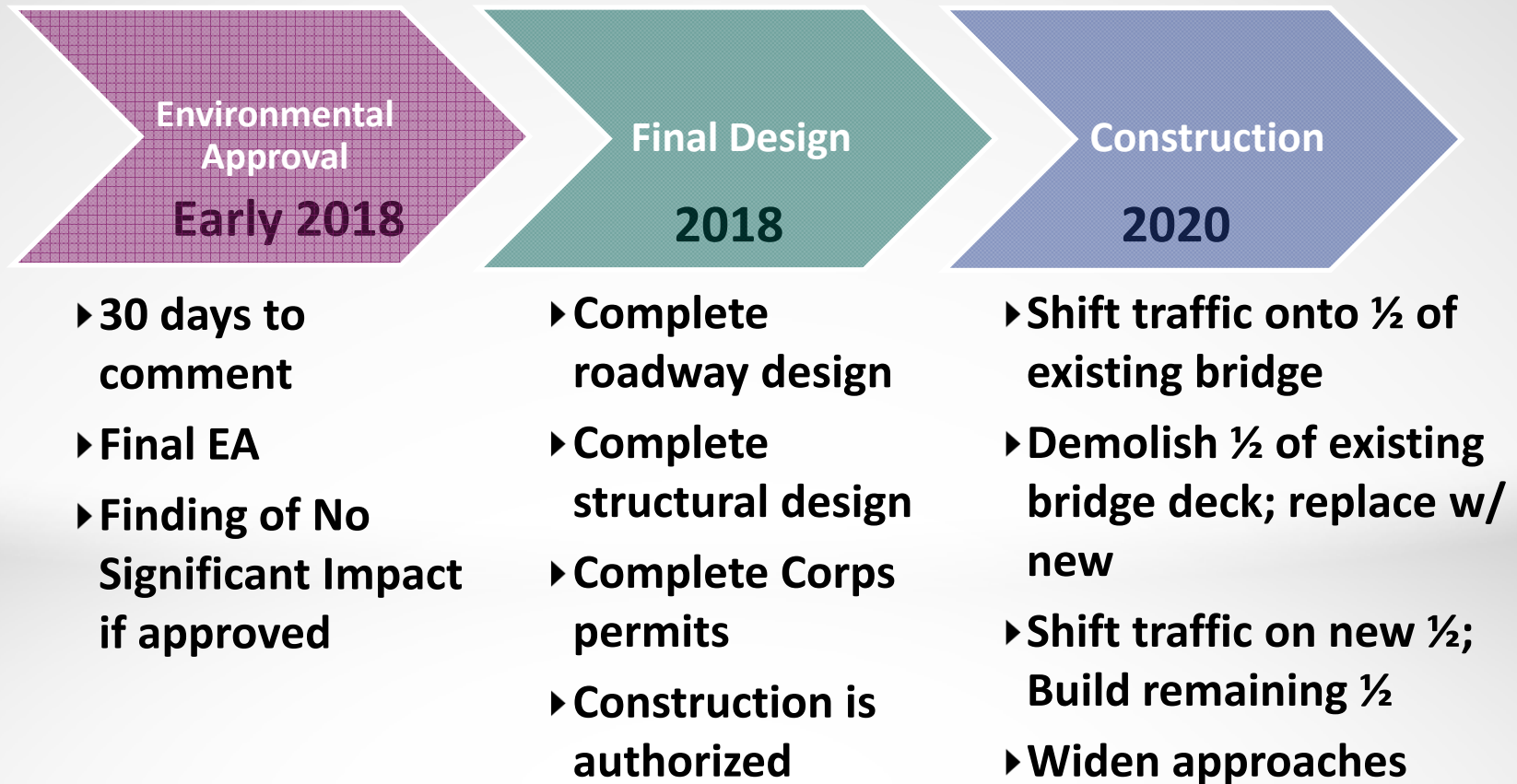
Key Study Components and Results

Draft EA Summary and Findings

- ▶ **Undertook public and agency scoping**
- ▶ **Developed and refined purpose and need**
- ▶ **Evaluated design and access alternatives**
- ▶ **Coordinated with land management and regulatory agencies**
- ▶ **Documented potential environmental effects**
 - **Mostly temporary in nature**
 - **Would be minimized through mitigation measures**

Next Steps and Timeline

From NEPA Through Construction



Where to Review the EA

Three Repositories

- ▶ **Mesquite Library**
121 W. First North St.
- ▶ **Washington County Library –
St. George Branch**
88 W. 100 South
- ▶ **Beaver Dam Lodge**
452 Old Highway 91 North
- ▶ **Online at**
azdot.gov/business/environmental-planning/recently-approved-environmental-assessments



How to Comment

Please Comment by December 14, 2017

- ▶ Speak at the meeting (or one-on-one with the court reporter) tonight
- ▶ Complete a comment card and leave it with us tonight
- ▶ E-mail your comment to:
projects@azdot.gov
- ▶ Comment online at:
www.azdot.gov/VRB1Comments
- ▶ Mail your comment to:
Virgin River Bridge #1, c/o ADOT Community Relations, 1655 West Jackson Street, MD126F, Phoenix, AZ 85007
- ▶ Call 855.712.8530 and leave a message





**Thank you for your
participation!**

