

# State Route 30

## (Proposed Loop 303 to Proposed Loop 202)

**Public Information Meeting**

**January 21, 2015**

**Fowler Elementary School**

**6707 W Van Buren Street**

**Phoenix, AZ 85043**

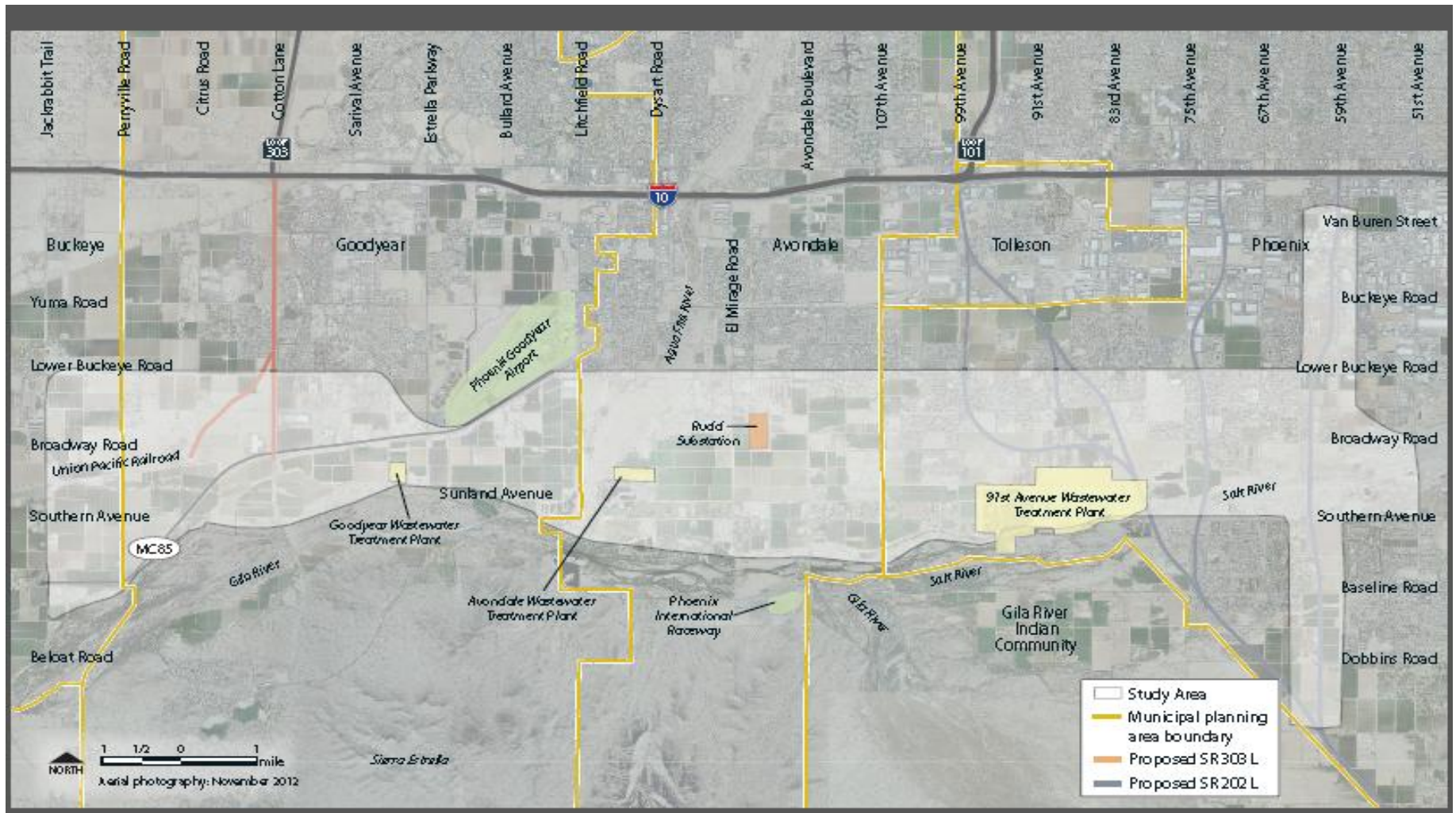
# Welcome

- ▶ Introductions
  - Arizona Department of Transportation (ADOT)
  
- ▶ Tonight's meeting will provide:
  - An overview of the study
  - An overview of the potential alternatives
  - Study schedule
  - Receive your comments

# Title VI Overview

- Title VI is a federal law that prohibits discrimination on the basis of race, color, or national origin in Federally assisted programs & activities.
- The law specifically states:
- “No person in the United States shall on the ground of race, color, or national origin be excluded from participation in, denied the benefits of, or subjected to discrimination under any program or activity receiving Federal financial assistance.” (42 USC 200d)
- ADOT’s Title VI Policy:
- Assures that no person shall on the grounds of race, color, national origin, gender, age, or disability be excluded from participation in, be denied benefits of, or be otherwise subjected to discrimination under any ADOT sponsored program or activity.

# Study Area



# Study Limits and Purpose

- SR 30 from Loop 303 to Loop 202
- Provide links to the regional transportation system and serve regional mobility needs
- Reduce congestion of future traffic volumes
- Implement the Regional Transportation Plan funded by Maricopa County voters with Proposition 400 (November 2004)

# Study Update

- Summer 2005 – Study Began
- March 2006 – Agency and Public Scoping Meetings
- Summer 2007 – Public Information Meeting

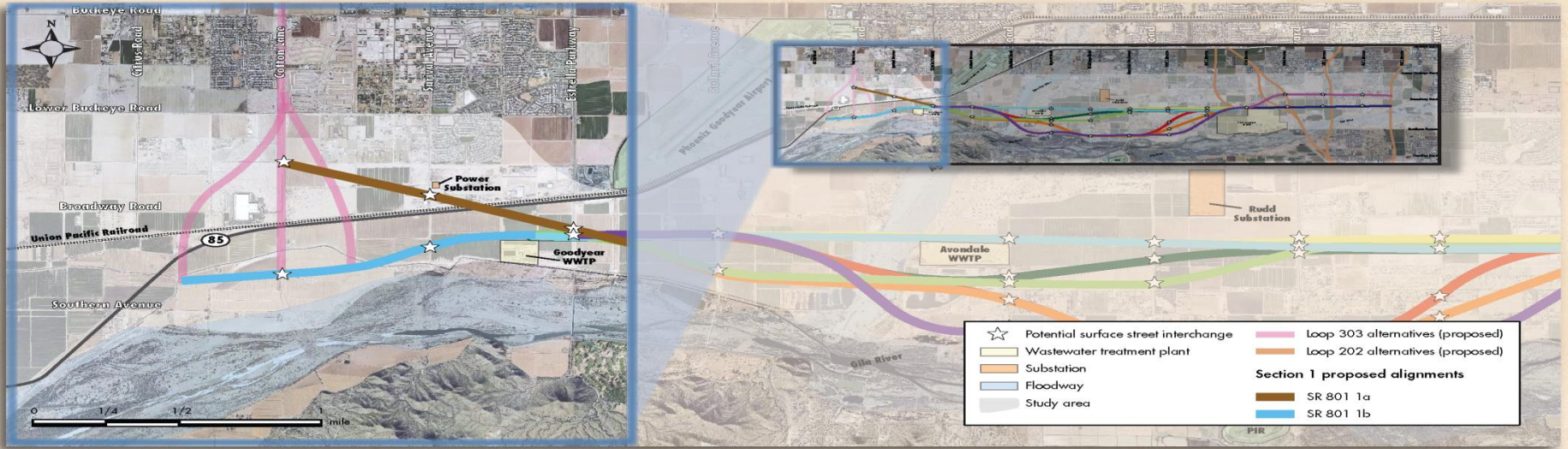
## Study Update (continued)

- Late 2007 – Door open for Center Alignment
- 2008 to 2011 – Study Stalled (lack of consensus)
- Late 2011 – Center Hybrid Alignment was created
- 2013 to Summer 2014 – Study Stalled (funding constraints)
- 2015 – ADOT Public Open House

# Original Alternatives



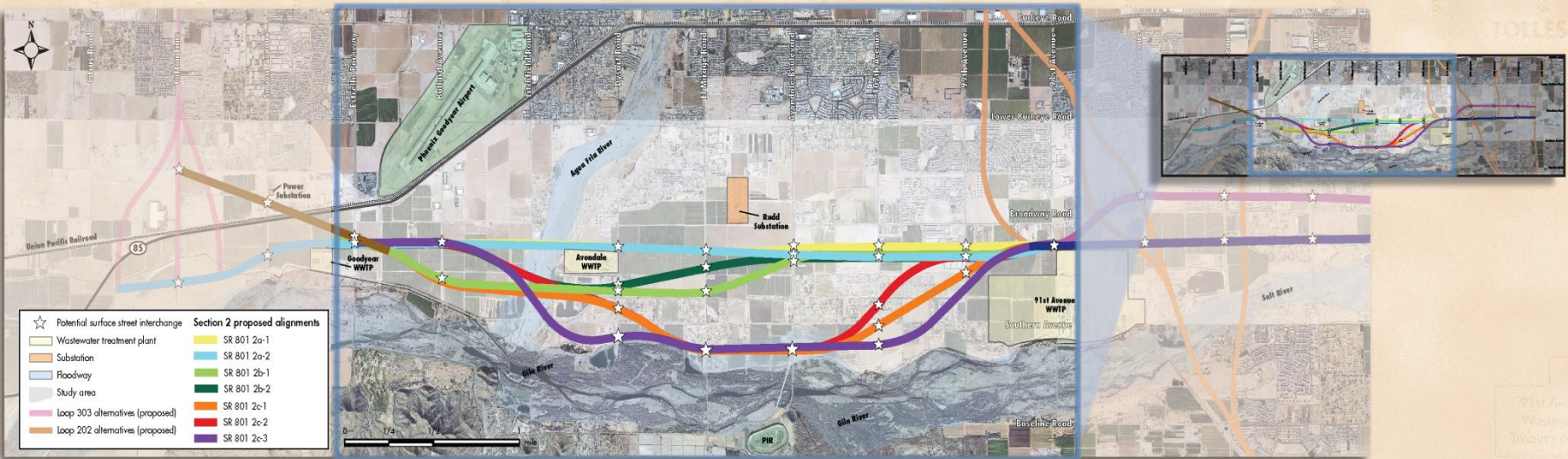
# Section 1 Alternatives



## Subsection Comparison

Subsections	COST AND RIGHT-OF-WAY								COMMUNITY SUPPORT			ENGINEERING					ENVIRONMENTAL																	
	Relative Construction Costs	Relative Right-of-Way Costs	Net Right-of-Way Acreage	Residential Displacements (existing)	Residential Displacements (plotted)	Business Displacements	Dairy Displacements	Impacts on Future Schools	Sand and Gravel Operation Impacts: Past, Current, and Future	Goodyear City Council	Avondale City Council	Phoenix Transportation Subcommittee	Marricopa County/Supervisor Wilcox	Geometric Design	Drainage Implications	Traffic Operations	Major Utility Impacts	Maintenance Issues	Prime and Unique Farmlands	Biological Impacts: Critical Habitat and Vegetation	Biological Impacts: Wildlife Threatened, Endangered, and Species of Concern	Floodplain Impacts	Jurisdictional Waters Impacts	Water Resources Impacts	Noise Level Impacts (existing conditions)	Air Quality Impacts	Visual Resources Impacts	Hazardous Material Impacts	Section 4(f) Resources Impacts	Environmental Justice: Probability of Impacts	Planned Development Impacts	Cultural Resources Historic Impacts	Cultural Resources Prehistoric Impacts	
1a	●	●	●	●	●	●	●	●	●	●	●	●	●	●	●	●	●	●	●	●	●	●	●	●	●	●	●	●	●	●	●	●	●	●
1b	○	○	○	○	○	○	○	○	○	○	○	○	○	○	○	○	○	○	○	○	○	○	○	○	○	○	○	○	○	○	○	○	○	○

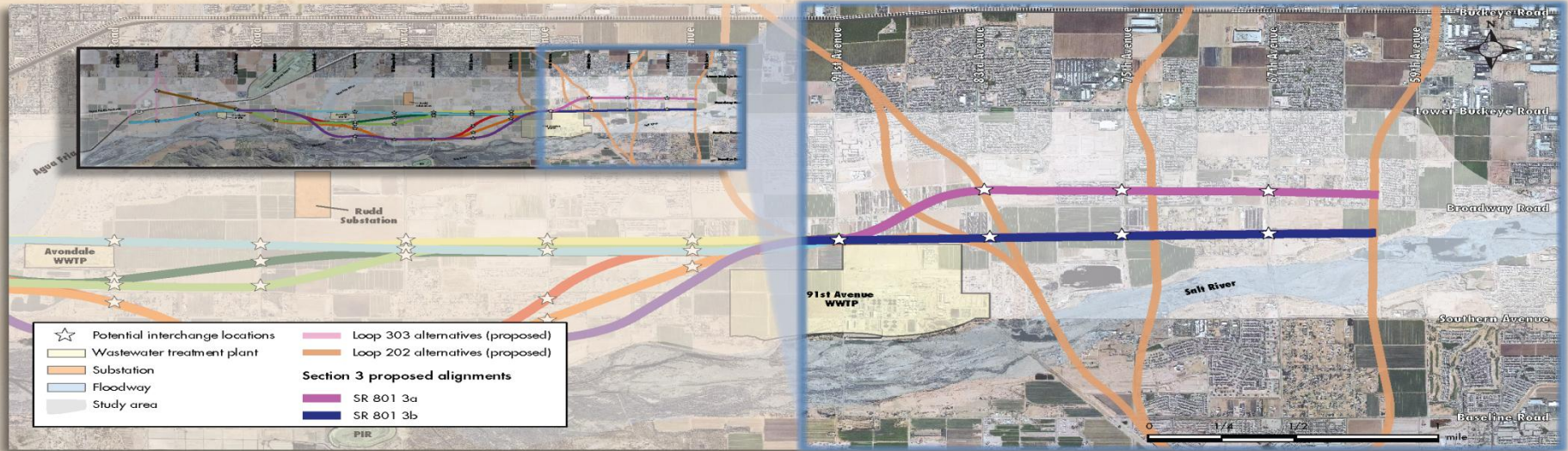
# Section 2 Alternatives



## Subsection Comparison

Subsections	COST AND RIGHT-OF-WAY										COMMUNITY SUPPORT			ENGINEERING				ENVIRONMENTAL																
	Relative Construction Costs	Relative Right-of-Way Costs	Net Right-of-Way Acreage	Residential Displacements (existing)	Residential Displacements (planned)	Business Displacements	Dairy Displacements	Impacts on Future Schools	Sand and Gravel Operation Impacts: Past, Current, and Future	Goodyear City Council	Avondale City Council	Phoenix Transportation Subcommittee	Mesa/Scottsdale/Supervisor Wilcox	Geometric Design	Drainage Implications	Traffic Operations	Major Utility Impacts	Maintenance Issues	Prime and Unique Farmlands	Biological Impacts: Critical Habitat and Vegetation	Biological Impacts: Wildlife (Sage Grouse, Junco, and Species of Concern)	Floodplain Impacts	Jurisdictional Waters Impacts	Water Resources Impacts	Noise Level Impacts (existing conditions)	Air Quality Impacts	Visual Resources Impacts	Hazardous Material Impacts	Section 4(f) Resources Impacts	Environmental Justice: Probability of Impacts	Planned Development Impacts	Cultural Resources Historic Impacts	Cultural Resources Prehistoric Impacts	
2a-1	○	○	○	○	○	○	○	○	○	○	○	○	○	○	○	○	○	○	○	○	○	○	○	○	○	○	○	○	○	○	○	○	○	
2a-2	○	○	○	○	○	○	○	○	○	○	○	○	○	○	○	○	○	○	○	○	○	○	○	○	○	○	○	○	○	○	○	○	○	
2b-1	○	○	○	○	○	○	○	○	○	○	○	○	○	○	○	○	○	○	○	○	○	○	○	○	○	○	○	○	○	○	○	○	○	
2b-2	○	○	○	○	○	○	○	○	○	○	○	○	○	○	○	○	○	○	○	○	○	○	○	○	○	○	○	○	○	○	○	○	○	
2c-1	○	○	○	○	○	○	○	○	○	○	○	○	○	○	○	○	○	○	○	○	○	○	○	○	○	○	○	○	○	○	○	○	○	
2c-2	○	○	○	○	○	○	○	○	○	○	○	○	○	○	○	○	○	○	○	○	○	○	○	○	○	○	○	○	○	○	○	○	○	
2c-3	○	○	○	○	○	○	○	○	○	○	○	○	○	○	○	○	○	○	○	○	○	○	○	○	○	○	○	○	○	○	○	○	○	○

# Section 3 Alternatives



## Subsection Comparison



Subsections	COST AND RIGHT-OF-WAY								COMMUNITY SUPPORT			ENGINEERING				ENVIRONMENTAL																			
	Relative Construction Costs	Relative Right-of-Way Costs	Net Right-of-Way Acreage	Residential Displacements (existing)	Residential Displacements (plotted)	Business Displacements	Dairy Displacements	Impacts on Future Schools	Sand and Gravel Operation Impacts: Past, Current, and Future	Goodyear City Council	Avondale City Council	Phoenix Transportation Subcommittee	MariCopa County/Supervisor Wilcox	Geometric Design	Drainage Implications	Traffic Operations	Major Utility Impacts	Maintenance Issues	Prime and Unique Farmlands	Biological Impacts: Critical Habitat and Vegetation	Biological Impacts: Wildlife Threatened, Endangered, and Species of Concern	Floodplain Impacts	Jurisdictional Waters Impacts	Water Resources Impacts	Noise Level Impacts (existing conditions)	Air Quality Impacts	Visual Resources Impacts	Hazardous Material Impacts	Section 4(f) Resources Impacts	Environmental Justice: Probability of Impacts	Planned Development Impacts	Cultural Resources Historic Impacts	Cultural Resources Prehistoric Impacts		
3a	●	●	●	●	●	●	●	●	●	●	●	●	●	●	●	●	●	●	●	●	●	●	●	●	●	●	●	●	●	●	●	●	●	●	
3b	○	○	○	○	○	○	○	○	○	○	○	○	○	○	○	○	○	○	○	○	○	○	○	○	○	○	○	○	○	○	○	○	○	○	○

# North and South Alternatives



# Four Current Alternatives



# State Route 30 Public Information Meeting

## SR 30 Evaluation Criteria North Alternative



**LEGEND**

- SR 30 North
- Options: SR 303L
- Future SR 202L
- Full Interchange
- Half Interchange

Map not to scale

COST AND RIGHT-OF-WAY					ENGINEERING					ENVIRONMENTAL																									
Construction Cost	Right-of-Way Cost (Acquisition & Relocations)	Total Cost (Construction + R/W)	Gross Right of Way Acreage	Residential Displacements (existing)	Dairy, Sand and Gravel, Other Business Impacts	Potential for Future Sand and Gravel Operation Impacts	Planned/Existing School Impacts	Geometric Design	Drainage Implications	Number of Pump Stations	Traffic Operations	Phoenix Int Raceway Special Event Traffic Considerations	Major Utility Impacts	Maintenance Issues	Other Engineering Challenges	Floodplain Impacts	Levee Reconstruction Permitting	Jurisdictional Waters Impact	Wetland Impacts	Water Resource Impacts	Relative Noise Impacts (existing conditions)	Air Quality Impacts	Visual Quality Rating	Hazardous Material Impacts	Section 4(f) Element Impacts	Environmental Justice Issues	Biological Resources Impacts	Prime & Unique Farmlands	Planned Development Impacts	Cultural Resources (Historic) Site Impacts	Cultural Resources (Prehistoric) Site Impacts	Traditional Cultural Property Impacts	Cultural Resources Impacts (Historic Architecture)	Section 4(f) Resource Impacts	
○	○	○	○	○	○	○	○	○	○	○	○	○	○	○	○	○	○	○	○	○	○	○	○	○	○	○	○	○	○	○	○	○	○	○	○

○ Most desirable feature or least impact  
 ◐ Average desirability or average impact  
 ● Least desirable feature or most impact

# State Route 30 Public Information Meeting

## SR 30 Evaluation Criteria Center Alternative



**LEGEND**

- SR 30 Center
- Options: SR 303L
- Future SR 202L
- Full Interchange
- Half Interchange

Map not to scale

COST AND RIGHT-OF-WAY				ENGINEERING				ENVIRONMENTAL																											
Construction Cost	Right-of-Way Cost (Acquisition & Relocations)	Total Cost (Construction + R/W)	Gross Right of Way Acreage	Residential Displacements (existing)	Dairy, Sand and Gravel, Other Business Impacts	Potential for Future Sand and Gravel Operation Impacts	Planned/Existing School Impacts	Geometric Design	Drainage Implications	Number of Pump Stations	Traffic Operations	Phoenix Int Raceway Special Event Traffic Considerations	Major Utility Impacts	Maintenance Issues	Other Engineering Challenges	Floodplain Impacts	Section 408 Levee Reconstruction Permitting	Jurisdictional Waters Impact	Wetland Impacts	Water Resource Impacts	Relative Noise Impacts (existing conditions)	Air Quality Impacts	Visual Quality Rating	Hazardous Material Impacts	Section 4(f) Impacts	Environmental Issues	Biological Resources Impacts	Prime & Unique Farmlands	Planned Development Impacts	Cultural Resources (Historic) Site Impacts	Cultural Resources (Prehistoric) Site Impacts	Traditional Cultural Property Impacts	Cultural Resources Impacts (Historic Architecture)	Section 4(f) Resource Impacts	
●	●	●	○	○	○	○	○	○	○	○	○	○	○	○	○	○	○	○	○	○	○	○	○	○	○	○	○	○	○	○	○	○	○	○	○

○ Most desirable feature or least impact  
 ◐ Average desirability or average impact  
 ● Least desirable feature or most impact



# State Route 30 Public Information Meeting

## SR 30 Evaluation Criteria Hybrid Alternative



**LEGEND**

- SR 30 Hybrid
- Options: SR 303L
- Future SR 202L
- Full Interchange
- Half Interchange

Map not to scale

COST AND RIGHT-OF-WAY				ENGINEERING				ENVIRONMENTAL																											
Construction Cost	Right-of-Way Cost (Acquisition & Relocations)	Total Cost (Construction + R/W)	Gross Right of Way Acreage	Residential Displacements (existing)	Dairy, Sand and Gravel, Other Business Impacts	Potential for Future Sand and Gravel Operation Impacts	Planned/Existing School Impacts	Geometric Design	Drainage Implications	Number of Pump Stations	Traffic Operations	Phoenix Int Raceway Special Event Traffic Considerations	Major Utility Impacts	Maintenance Issues	Other Engineering Challenges	Floodplain Impacts	Section 408 Levee Reconstruction Permitting	Jurisdictional Waters Impact	Wetland Impacts	Water Resource Impacts	Relative Noise Impacts (existing conditions)	Air Quality Impacts	Visual Quality Rating	Hazardous Material Impacts	Section 4(f)(1)(B) Impacts	Environmental Justice Issues	Biological Resources Impacts	Prime & Unique Farmlands	Planned Development Impacts	Cultural Resources (Historic) Site Impacts	Cultural Resources (Prehistoric) Site Impacts	Traditional Cultural Property Impacts	Cultural Resources Impacts (Historic Architecture)	Section 4(f) Resource Impacts	
●	●	●	●	●	●	●	●	●	●	●	●	●	●	●	●	●	●	●	●	●	●	●	●	●	●	●	●	●	●	●	●	●	●	●	●

○ Most desirable feature or least impact  
 ◐ Average desirability or average impact  
 ● Least desirable feature or most impact

# State Route 30 Public Information Meeting

## SR 30 Evaluation Criteria South Alternative



**LEGEND**

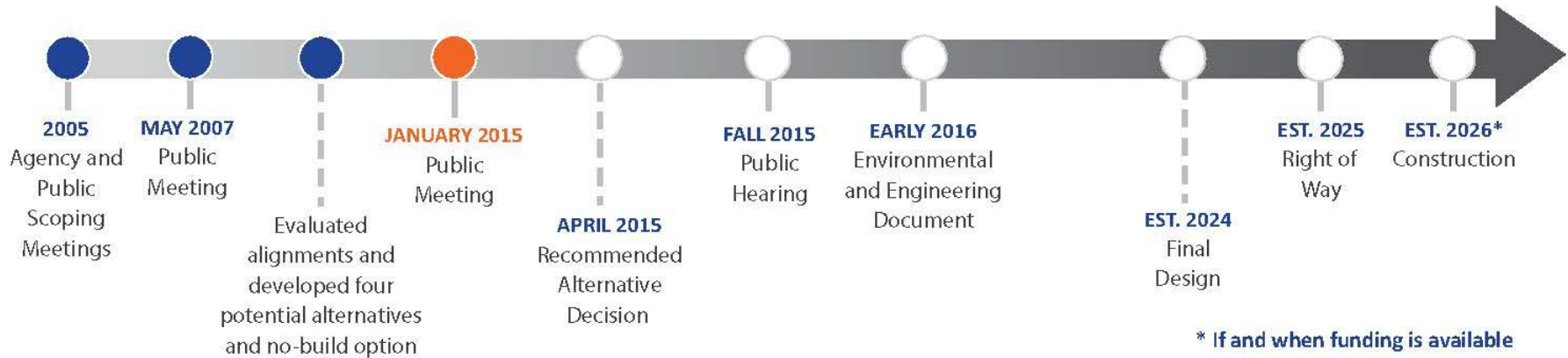
- SR 30 South
- Options: SR 303L
- Future SR 202L
- Full Interchange
- Half Interchange

Map not to scale

COST AND RIGHT-OF-WAY				ENGINEERING										ENVIRONMENTAL																
Construction Cost	Right-of-Way Cost (Acquisition & Relocations)	Total Cost (Construction + R/W)	Gross Right of Way Acreage	Geometric Design	Drainage Implications	Number of Pump Stations	Traffic Operations	Phoenix Int Raceway Special Event Traffic Considerations	Major Utility Impacts	Maintenance Issues	Other Engineering Challenges	Floodplain Impacts	Section 408 Levee Reconstruction Permitting	Jurisdictional Waters Impact	Wetland Impacts	Water Resource Impacts	Relative Noise Impacts (existing conditions)	Air Quality Impacts	Visual Quality Rating	Hazardous Material Impacts	Section 4(f) Impacts	Environmental Issues	Biological Resources Impacts	Prime & Unique Farmlands	Planned Development Impacts	Cultural Resources (Historic) Site Impacts	Cultural Resources (Prehistoric) Site Impacts	Traditional Cultural Property Impacts	Cultural Resources Impacts (Historic Architecture)	Section 4(f) Resource Impacts
●	●	●	●	●	●	●	●	●	●	●	●	●	●	●	●	●	●	●	●	●	●	●	●	●	●	●	●	●	●	●

○ Most desirable feature or least impact  
 ◐ Average desirability or average impact  
 ● Least desirable feature or most impact

## Project Timeline



# Your input is important

Comments must be received or postmarked by February 20, 2015 to be included in the study record

- Provide comments tonight
- Mail in written comments
  - C/o ADOT Community Relations, 1655 W Jackson, #126F, Phoenix, AZ 85007
- Online comments - [azdot.gov/SR30](http://azdot.gov/SR30)
- Email comments – [SR30@azdot.gov](mailto:SR30@azdot.gov)
- Phone - 855.712.8530

**YOUR INPUT IS IMPORTANT**  
Submit comments by Friday, Feb. 20, 2015 in order to have them included in the project record.

Survey may also be completed online at [azdot.gov/SR30](http://azdot.gov/SR30)

Name: \_\_\_\_\_ Email: \_\_\_\_\_

Address: \_\_\_\_\_

City \_\_\_\_\_ State \_\_\_\_\_ Zip \_\_\_\_\_

---



Please select the box of the one alignment you most prefer:

SR 30 North       SR 30 South  
 SR 30 Center       No Build  
 SR 30 Hybrid

General Comments: \_\_\_\_\_  
\_\_\_\_\_  
\_\_\_\_\_  
\_\_\_\_\_  
\_\_\_\_\_  
\_\_\_\_\_  
\_\_\_\_\_  
\_\_\_\_\_  
\_\_\_\_\_  
\_\_\_\_\_

Mail: c/o ADOT Communications • 1655 W. Jackson St. • Mail Drop 126F • Phoenix, AZ 85007  
Email: [SR30@azdot.gov](mailto:SR30@azdot.gov) • Phone: 855.712.8530

H876C10 14-308

  FOR MORE INFORMATION:  
[azdot.gov/SR30](http://azdot.gov/SR30)